



European Strategy Forum
on Research Infrastructures

Integrating **InRoad** findings in the European context towards **RI long-term sustainability**

12 DECEMBER 2018

InRoad Final Conference, Brussels

Jan HRUŠÁK

Project objectives

InRoad project seeks to contribute to a **better harmonisation** and synchronisation of **priority-setting, funding** and **lifecycle management** of Research Infrastructures (RI) through the **exchange of best practices** among the main stakeholders of EU Member States (MS), Associated Countries (AC) and also at European level. Additionally, the regional dimension will be considered by **integrating Smart Specialisation Strategies** in the work conducted.

Project success to be measured against these objectives

Triggering follow-up

Contents

Executive Summary	5
Main recommendations	9
Introduction	13
1. Establish and maintain excellence	18
Specific recommendations	19
Explanatory notes for the specific recommendations	20
2. Ensuring the right people are at the right place at the right time	28
Specific recommendations	29
Explanatory notes for the specific recommendations	29
3. Harmonise and integrate the operation of RIs and e-Is	34
Specific Recommendations	36
Explanatory notes for specific recommendations	36
4. Fully exploit the potential of RIs as innovation hubs	42
Specific Recommendations	44
Explanatory notes for the specific recommendations	45
5. Demonstrating the economic and wider benefit to society of RIs	53
Specific recommendations	55
Explanatory notes for the specific recommendations	55

LTS of RI - ESFRI Scripta Vol II. (2017)

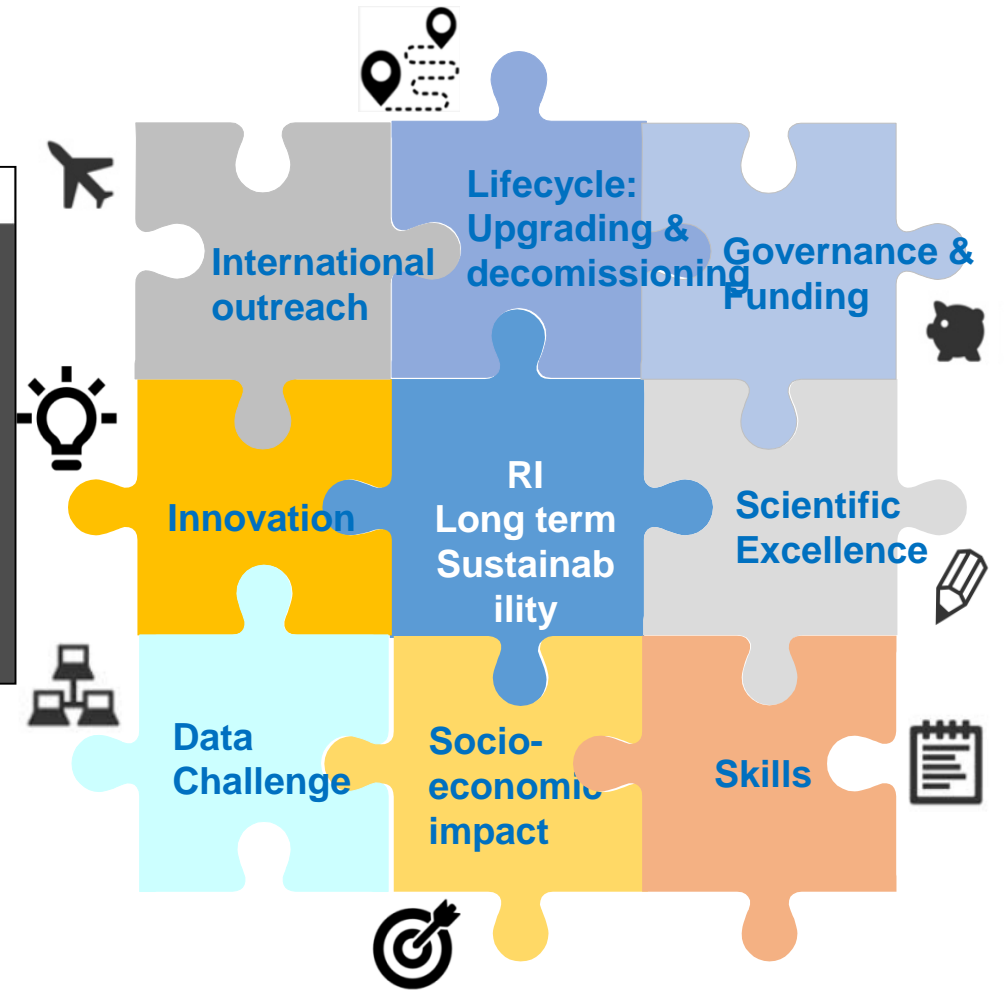
6. Effective RI governance, long-term funding and effective management	59
Specific Recommendations	61
Explanatory notes for the specific recommendations	61
7. Coordination at National and European levels	69
Specific recommendations	70
Explanatory notes for the specific recommendations	70
Appendices	79
Terms of Reference	80
Membership	83
Glossary	85





A Sustainable European RIs - *A plan for action*

- Stakeholder input
- 42 recommendations
- BG PRES event, 22-23 March
- CC 29 May on priority actions
- ICRI 2018, 12-14 Sept. 2018
- EOSC and the RIs
- RIs in the science policy dialogue



InRoad Report and Recommendations provide valuable input for further debate

- Timely in view of the ongoing policy discussions (EU, ERAC, ESFRI, ERF, GSF, ...)
 - EC / MS action plan for RI LTS (priority setting and implementation)
 - ERA reflection and governance (ERA priorities, coordination of NPs)
 - ERA NAPs monitoring (alignment of national actions)
 - Future of ESFRI discussion (National RM, LM monitoring, RI outreach to policies, ...)
- Theoretically founded and building on mix of desk studies and field work
- Evidence based and underpinned by good practice examples
- Integrating previous findings (SE, OECD GSF, ESFRI, EC, ...)

- Reflecting both, the top-down (Policy/funders) and bottom-up (RI) perspectives
- Respecting the national diversity and yet providing an unifying view
- Clearly structured and the argumentations easy to follow
 - Recommendations
 - Good practice examples
 - Country sheets and description of NRM processes
 - Comprehensive information on Structural funds and RIs
- Well balanced in the policy content
- Sets the scene for possible follow-up actions (EC, ESFRI, ...)



Relevance - Political context

- 17./18. Sept 2018 ERAC/RWP meeting at the DG level in Salzburg
 - Political discussion on ERA (opening for priorities)
 - Adopting Report on ERA advisory structure
- 30 Sept 2018 COMPET
 - Council Conclusions on ERA (Review of the ERA advisory structure, revisiting ERA priorities)
 - ERAC to hold strategic policy debates and to further develop the policy-mix for RDI for ERA
- 5./6. Dec 2018 ERAC WKS and Plenary
 - Start strategic discussion on strengthening ERA, implementing priorities and monitoring progress (ERAC Action plan and timeline, monitoring of NAPs)
- 11. Dec 2018 ESFRI – start of future oriented discussion on RI policy issues

Contribution to the ongoing ESFRI discussion on RI monitoring

All components delivered by InRoad are relevant

- The final Report
- The Recommendations
- The Good practice examples
- The Compendium

Impact

- The regional Workshops
- Engagement of national stakeholders

ESFRI has triggered the NRMP and other national RI strategies

- The Compendium showing the degree of coordination and coherence among the MS
- The state of play – country sheets theoretical analyses of current frameworks in use,
- Summary on priority setting exercises at all levels and all fields

Report and recommendations

- Defining a minimal common set of criteria for RI RM
- Best practices for national roadmap drafting and evaluation procedures
- Exploring further adjustment of regulatory framework and instruments ... etc.

**ESFRI has implemented RI related funding issues in the RI „readiness“ evaluation
Funding is also in the center of the „Landmark concept“**

InRoad's Reference to funding (Recommendations and supplementary material)
Relevance for the ESFRI strategic discussion , for the Evaluation methodology and monitoring

Improving stability and predictability of RI funding

Funding planning of the entire lifecycle of RI

Contribution to the RI & Structural funds discussion

Direct contribution to ESFRI's sustainability and monitoring discussion

- List of minimal Business plan component
- Background document with explanatory notes
- Contribution to the KPI and KII discussion

Direct contribution to ESFRI's sustainability and monitoring discussion

- List of minimal Business plan components
- Background document with explanatory notes
- Contribution to the KPI and KII discussion

Conclusion

InRoad's findings are of considerable value for European RI policy

Thank you for the attention

hrusak@kav.cas.cz

<http://www.esfri.eu>